

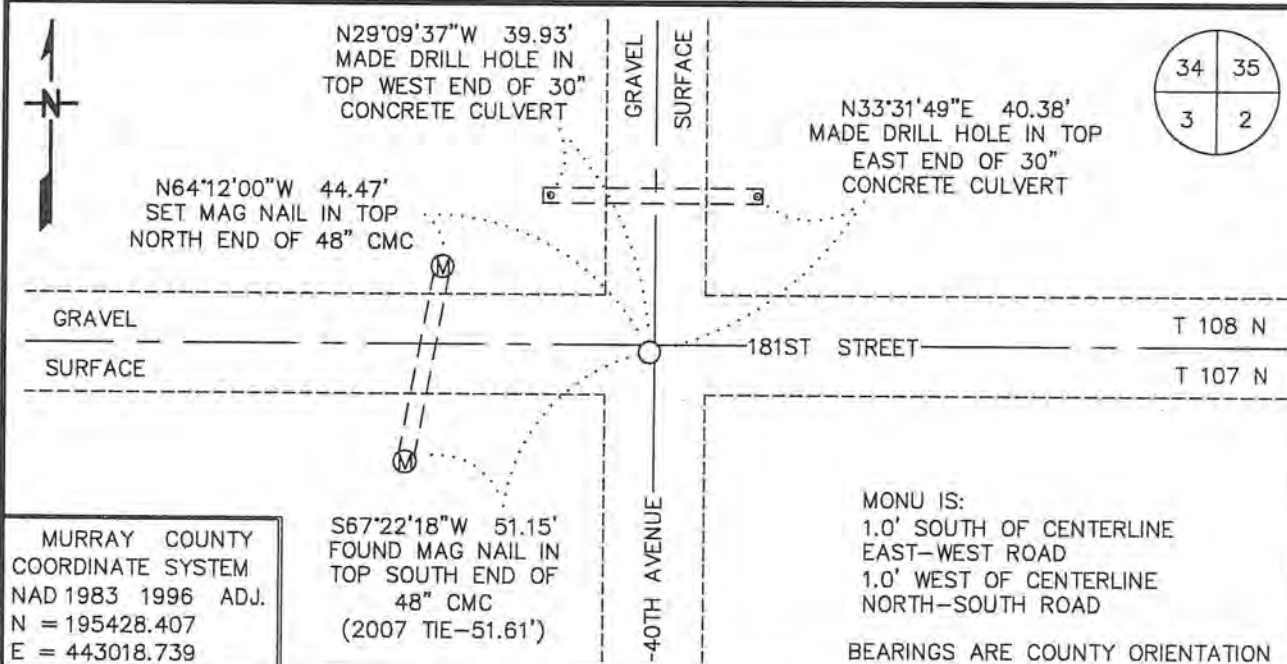
Index No. A-17

CERTIFICATE OF LOCATION OF GOVERNMENT CORNER

NORTHEAST Corner of Section 3, Township 107 N, Range 43 W
5TH Principal Meridian, State of Minnesota, County of MURRAY

At the corner location shown on the sketch:

- On 11/2/16 found a 14" X 16" PINK STONE, DOWN 3.0'
DATE
- left monument as found, lowered monument, removed monument (explain)
- On 11/2/16 Placed a 3/4" X 24" REBAR WITH PLASTIC CAP STAMPED
DATE
"MN DNR LS 17003", DOWN 0.5', OVER FOUND STONE



Statement of evidence for this corner location is on back of this page.

FEBRUARY 2017
WMA00754

I hereby certify that this plan, specification, or report was prepared by me or under my direct supervision and that I am a duly Licensed Land Surveyor under the laws of the State of Minnesota.

SIGNATURE Bruce W. Shepherd DATE 10/9/17 License Number 17003
BRUCE W. SHEPPERD

Northeast Corner of Section 3, Township 107 North, Range 43 West
Page 1 of 2

The DNR Division of Lands and Minerals contacted the following for survey information:

Website - mngeo.state.mn.us for GLO plat and field notes

Website - murray-countymn.com for section and quarter section corner information
Murray County Recorder's Office

Bueltel-Moseng Land Surveying, Inc. of Marshall

Westwood Multi-Disciplined Surveying & Engineering of Eden Prairie

1861 U.S. General Land Office notes, obtained from mngeo.state.mn.us, show the corner marked with a post and deposited charcoal in a mound of earth and sod with trench, as per instructions.

1908 Plat Books for Cameron Township, obtained from the County Recorder's Office, show
1926 roads east-west-south in the area of the corner.

1927 October 27, A Surveyor's Record Book, page 345, obtained from the County Recorder's Office, which is also on Website murray-countymn.com, shows that the northwest corner of Section 2 was established by using the northwest corner of Section 3 and the northeast corner of Section 1. A distance of 5284 feet is shown along the north line of Section 3.

A 14" x 14" x 22" pink boulder was set to mark the location of the corner and the following ties were taken to it:

center of end culvert, southwest, 46.7 feet

center steel culvert, northwest 43.0 feet

2007 July 5, A Certificate of Location of Government Corner, obtained from the County Recorder's Office, which is also on Website murray-countymn.com, signed by Christopher Moehrl, PE & LS No 40853, shows that a ½ inch rerod was found down 0.5 of a foot at the corner. The following ties are shown to the corner:

at the intersection of the center line of roads north, south, east and west

set PK nail on west side of wood post, up 3.0 feet, northeast, 51.24 feet

set PK nail on northwest side of wood post, up 3.0 feet, southeast, 48.30 feet

set PK nail on south side of culvert, southwest, 51.61 feet

Northeast Corner of Section 3, Township 107 North, Range 43 West
Page 2 of 2

- 2016 November 2, the DNR Division of Lands and Minerals found a ½ inch diameter rebar, down 0.7 of a foot at the corner. Then a hole was dug with a backhoe the center being the found rebar and a 14 inch by 16 inch pinkish colored stone was found standing in an upright position down 3.0 feet. The stone was found to be:
- 5283.41 feet from the northwest corner of Section 3
 - 2612.32 feet (2610.96 feet – GLO) from the east quarter corner of Section 3
 - 0.72 of a foot south of the found rebar
 - 1 foot south of the center line of an east-west road
 - 1 foot west of the center line of a north-south road

Analysis of the above information led the DNR Division of Lands and Minerals to conclude that the found 14 inch by 16 inch pinkish colored stone marks the location of the corner as established in 1927.

The found rebar was discarded and a ¾ inch by 24 inch rebar with a plastic cap stamped “MN DNR LS 17003” was set over the found 14 inch by 16 inch pinkish colored stone as shown on the sketch of reference ties.

Searched for and found all three 2007 record ties but only measured to one as shown on the sketch of reference ties – the other two ties are wood posts which are unstable.